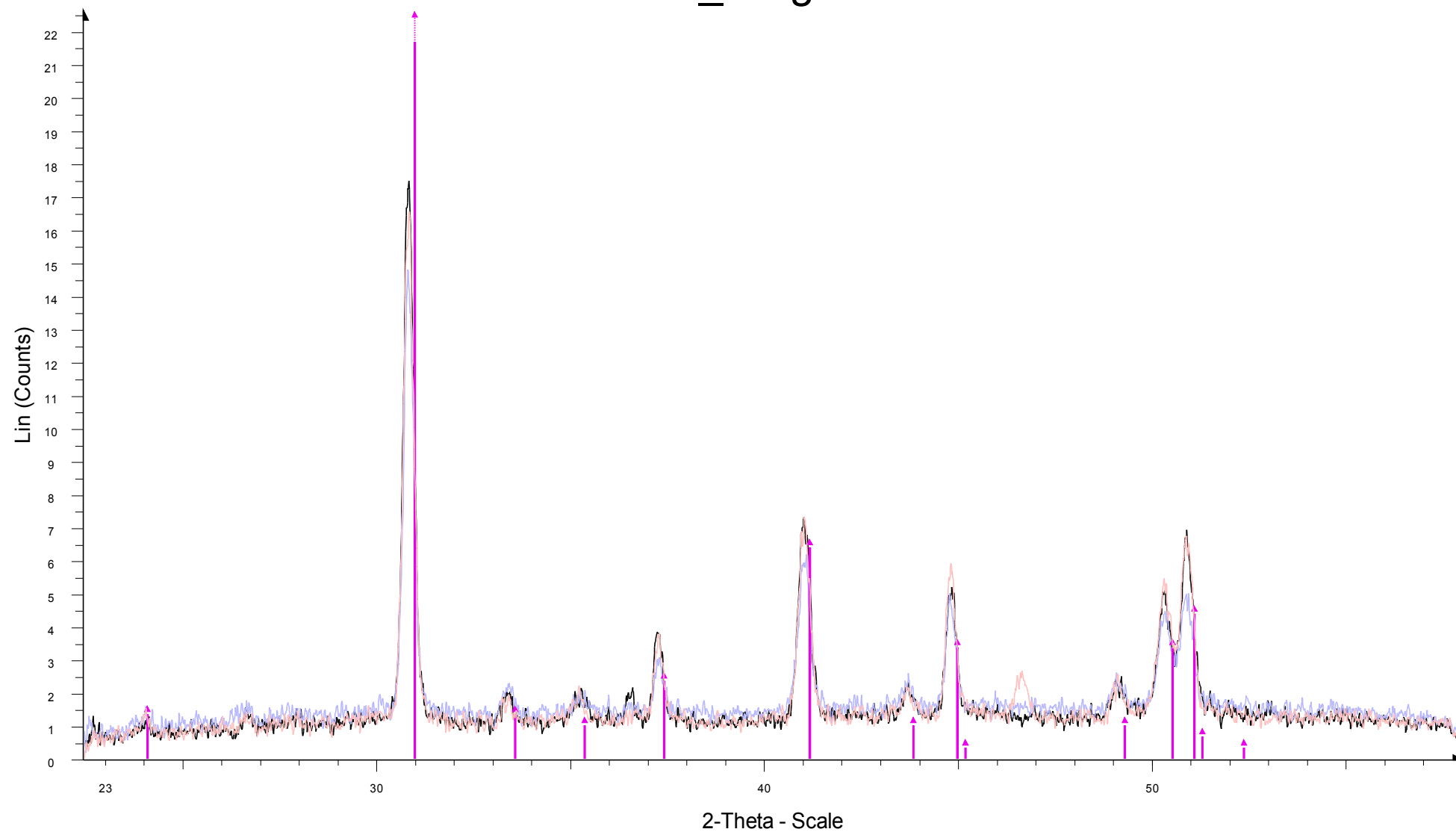


Calcite_Aragonite



Calcite_Aragonite - File: 81.raw - Type: 2Th alone - Start: 22.410 ° - End: 58.000 ° - Step: 0.010 ° - Step time: 120. s - Temp.: 25 °C (Room) - Time Started: 0 s - 2-Theta: 22.410 ° - Theta: 20.100 ° - Chi: 0.62 ° - Phi: 350.59 ° - X: 34
Operations: Import

Calcite_Aragonite - File: 82.raw - Type: 2Th alone - Start: 22.410 ° - End: 58.000 ° - Step: 0.010 ° - Step time: 120. s - Temp.: 25 °C (Room) - Time Started: 0 s - 2-Theta: 22.410 ° - Theta: 20.100 ° - Chi: 0.62 ° - Phi: 350.59 ° - X: 36
Operations: Import

Calcite_Aragonite - File: 83.raw - Type: 2Th alone - Start: 22.410 ° - End: 58.000 ° - Step: 0.010 ° - Step time: 120. s - Temp.: 25 °C (Room) - Time Started: 0 s - 2-Theta: 22.410 ° - Theta: 20.100 ° - Chi: 0.62 ° - Phi: 350.59 ° - X: 38
Operations: Import

▲ 36-0426 (*) - Dolomite - CaMg(CO₃)₂ - Y: 51.67 % - d x by: 1. - WL: 1.54056 - Rhombohedral -